

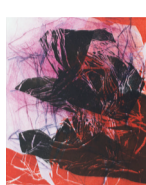
cooler than blue



1. **LG Carpenter**
 "Untitled" ca. 1997
 c-print
 21x25in - \$1,200



2. **Layqa Nuna Yawar**
 "love in the age of islamophobia" 2017
 oil on linen
 14x11in - \$3,000



3. **Elizabeth Gilfilen**
 "Lost Edges #12" 2013
 drypoint monoprint
 24x20in - \$1,200



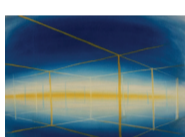
4. **Suzanne Laura Kammin**
 "Gorgon" 2013
 oil on canvas
 33x25in - \$3,500



5. **Joseph O'Neal**
 "Onassis 15 & 16 (diptych)" 2019
 mixed media on canvas
 56x84in - \$5,000



6. **Fausto Sevilla**
 "Untitled" 2014
 digital print 1 of 5
 44x35in - \$1,500



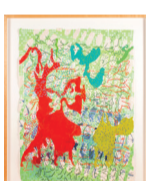
7. **Lizzy Storm**
 "Untitled" 2015
 gouache and watercolor on paper
 25x37in - \$1,000



8. **Dahlia Elsayed**
 "The Tenth Month" 2005
 BAT, silkscreen print on pigmented handmade paper
 22x28in - \$3,000



9. **Anne Q. McKeown**
 "Green Screen" 2004
 acrylic and ink on handmade paper
 43x37in - \$3,000



10. **Anne Q. McKeown**
 "Kermit's Fallout" 2004
 acrylic and ink on handmade paper
 43x37in - \$3,000



11. **Anne Q. McKeown**
 "Untitled" 1995
 oil on canvas
 55x41in - \$6,000



12. **Anne Q. McKeown**
 "Untitled (triptych)" 2002-04
 mixed media layered into handmade paper
 45x108in - \$7,200



13. **Aaron Leonard Freeland**
 "Untitled" ca. 1997
 monoprint
 30x22in - \$2,000

Cooler Than Blue is the second exhibition at NJPAC curated by Newark's artist-run Gallery Aferro, founded in 2003. Rotating exhibitions allow patrons of NICO Kitchen + Bar to enjoy (and even take home) compelling works by artists who are part of Newark's lively independent visual arts scene.

Cooler Than Blue is a group exhibit that celebrates the color blue in all its forms - from ultramarine and indigo to prussian blue and ultrablack. Painters, printmakers and photographers included in the exhibition, whether working in an abstract or figurative manner, have an intense working relationship to the color blue.

For more information about Gallery Aferro and the art or to inquire about purchasing artwork, visit aferrro.org, email info@aferrro.org or call 973.353.9533.